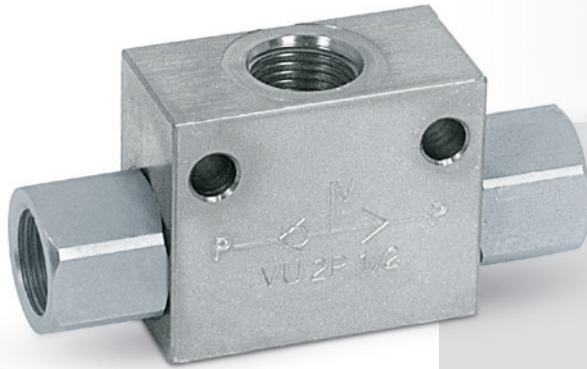


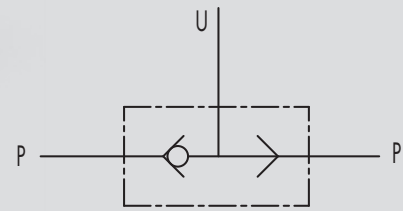
# 6.5 - VALVOLE COMMUTATRICI PER L'UTILIZZO DI DUE POMPE ALTERNATE

## 6.5 - SHUTTLE VALVES

TIPO/TYPE  
**VU2P**



SCHEMA IDRAULICO  
 HYDRAULIC DIAGRAM



**IMPIEGO:**

Valvola utilizzata per selezionare, tra due segnali indipendenti di pressione, quello con valore maggiore ed escludere l'altro.

**MATERIALI E CARATTERISTICHE:**

**Corpo:** acciaio zincato  
**Guarnizioni:** BUNA N standard  
**Tenuta:** a sfera

**MONTAGGIO:**

Collegare gli attacchi P alle linee da selezionare e U alla linea da alimentare.

**USE AND OPERATION:**

This valve is used to select higher pressure between two pressure lines.

**MATERIALS AND FEATURES:**

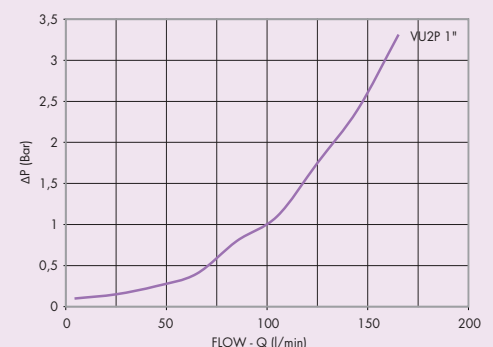
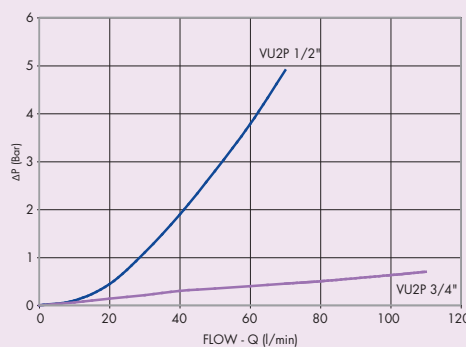
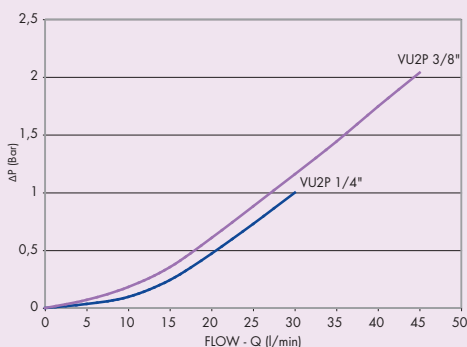
**Body:** zinc-plated steel  
**Seal:** BUNA N standard  
**Tightness:** ball type

**APPLICATIONS:**

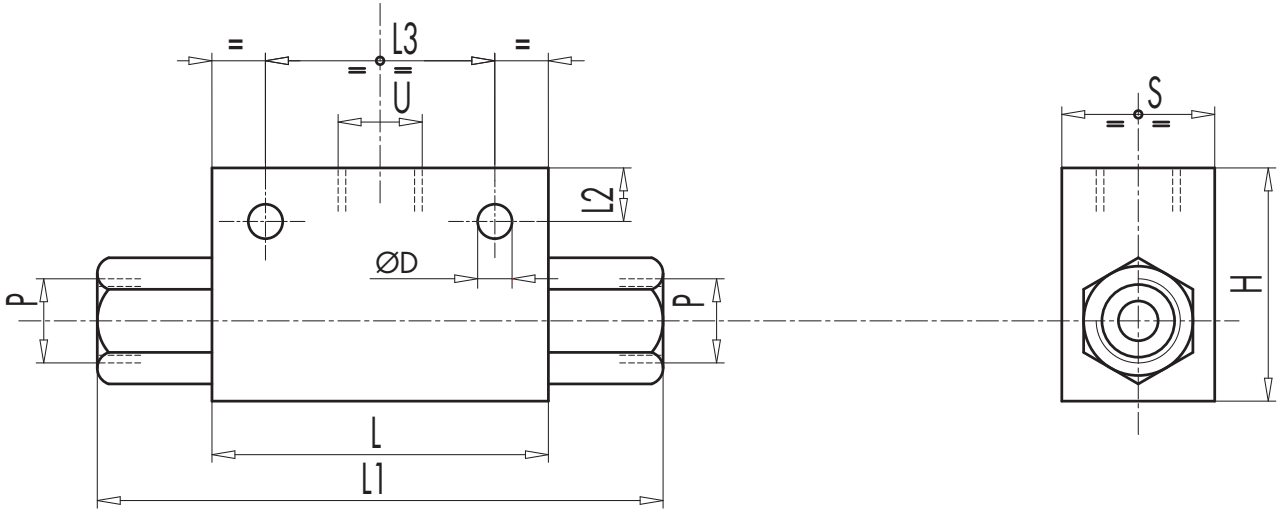
Connect ports P to the 2 lines to select and U to the line to feed .

PERDITE DI CARICO  
 PRESSURE DROPS CURVE

Temperatura olio: 50°C - Viscosità olio: 30 cSt  
 Oil temperature: 50°C - Oil viscosity: 30 cSt



CODICE CODE	SIGLA TYPE	PORTATA MAX MAX FLOW Lt./min	PRESSIONE MAX MAX PRESSURE Bar
<b>V0666</b>	VU2P 1/4"	30	450
<b>V0668</b>	VU2P 3/8"	45	450
<b>V0670</b>	VU2P 1/2"	70	450
<b>V0680</b>	VU2P 3/4"	110	350
<b>V0685</b>	VU2P 1"	150	300



CODICE CODE	SIGLA TYPE	U - P	L	L1	L2	L3	H	S	ØD	PESO WEIGHT
		GAS	mm	mm	mm	mm	mm	mm	mm	Kg
<b>V0666</b>	VU2P 1/4"	G 1/4"	60	104	9	44	40	30	8,5	0,560
<b>V0668</b>	VU2P 3/8"	G 3/8"	60	104	9	44	40	30	8,5	0,530
<b>V0670</b>	VU2P 1/2"	G 1/2"	60	104	12	44	50	30	8,5	0,652
<b>V0680</b>	VU2P 3/4"	G 3/4"	80	130	12	44	58	35	8,5	1,086
<b>V0685</b>	VU2P 1"	G 1"	80	120	11	60	80	50	10,5	1,870